



Jackson Maunders

5 Bedroom Semi-Detached for Sale - **Guide Price £675,000**

Heyes Lane, Timperley, Cheshire, WA15 6EF

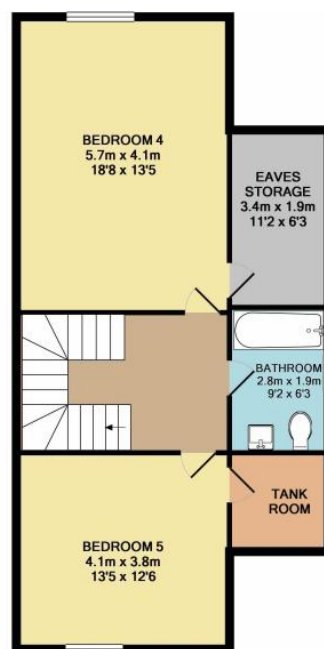
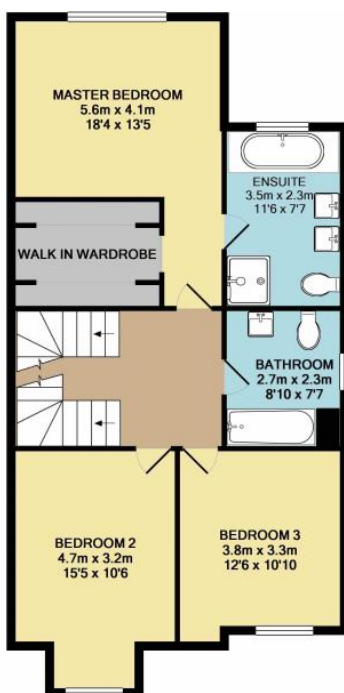
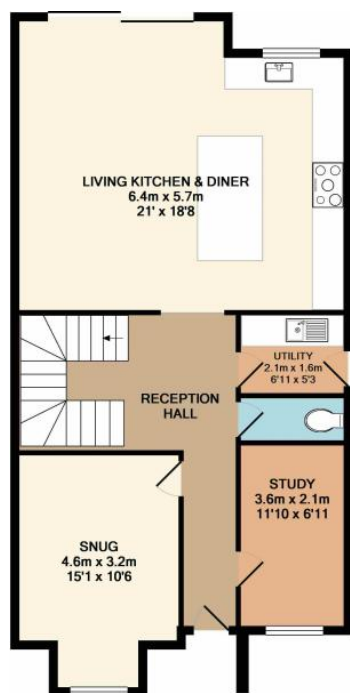
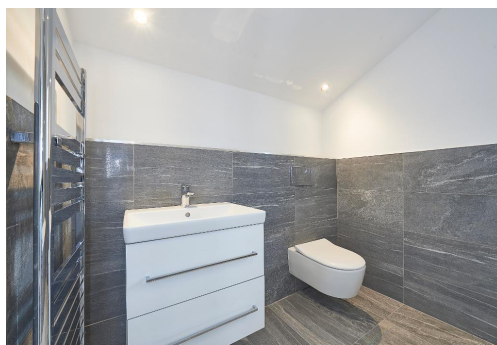


KEY FEATURES

- New Home • Five Bedrooms • Three Bathrooms • Lounge • Study • Kitchen/Dining/Living Room • Utility Room • Cloakroom

Description

A large semi detached family home which was built and completed towards the end of 2019. The accommodation which measures 2229sq ft comprises a good sized entrance hallway giving access to a utility, downstairs WC, good sized bay fronted living room, study and a beautifully proportioned dining/living kitchen with sliding doors opening out onto the patio and substantial rear gardens. There is a beautiful Oak Staircase which runs through the middle of the property providing access to the first and second floors. At first floor level leading from a good sized landing is a master bedroom with en-suite dressing room and en-suite bathroom, two further bedrooms and a family bathroom. At top floor level are two large bedrooms, the rear bedroom number five being particularly large and overlooking the rear garden. There is a third bathroom serving these two bedrooms and ample storage in the roof void. There is on site car parking for four cars and as previously mentioned beautifully proportioned lawned gardens to the rear extending to approximately 70 ft in length and not being over looked. Vacant property with no onward chain.



TOTAL APPROX. FLOOR AREA 215.2 SQ.M. (2316 SQ.FT.)

Whilst every attempt has been made to ensure the accuracy of the floor plan contained here, measurements of doors, windows, rooms and any other items are approximate and no responsibility is taken for any error, omission, or mis-statement. This plan is for illustrative purposes only and should be used as such by any prospective purchaser. The services, systems and appliances shown have not been tested and no guarantee as to their operability or efficiency can be given.

Made with Metropix ©2019