



# Jackson Maunders

4 Bedroom Semi-Detached for Rent - **£2,200 per month**

Upton Drive, Timperley, WA14 5QP

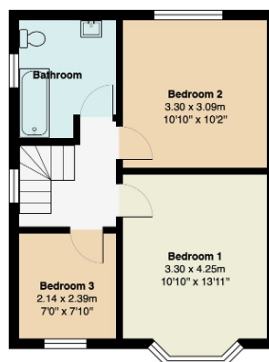
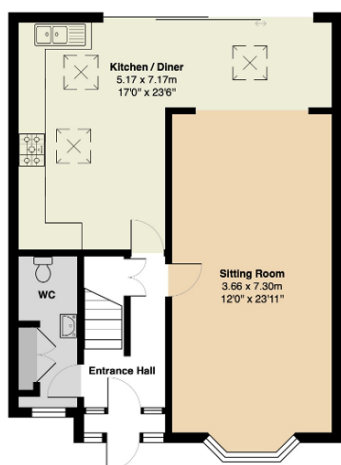


## KEY FEATURES

- Three Bedroom Semi • One Bedroom Detached Annexe • Extended • Open Plan Kitchen/Living/Dining
- Cloakroom WC • Large Garden • Close To Timperley Metro Station • Off Road Parking

## Description

xx Available Late April/Early May xx A superbly appointed and extended three bedroom semi detached family home located in this popular location close to Timperley Metro Station, Park Road Academy School and a number of local shops. The property has the unique added benefit of a self contained one bedroom annexe to the rear which could be ideal for either a dependant relative or a home office.



Total Area: 140.2 m² ... 1510 ft²