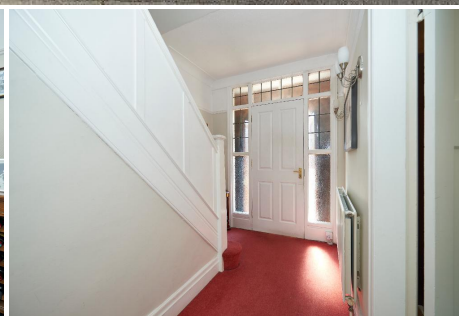




# Jackson Maunders

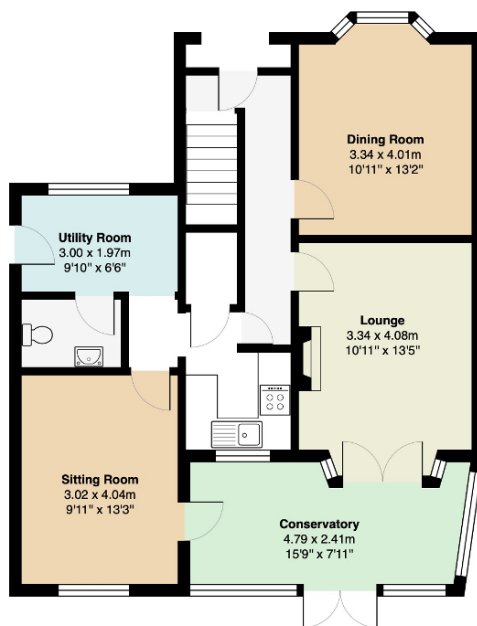
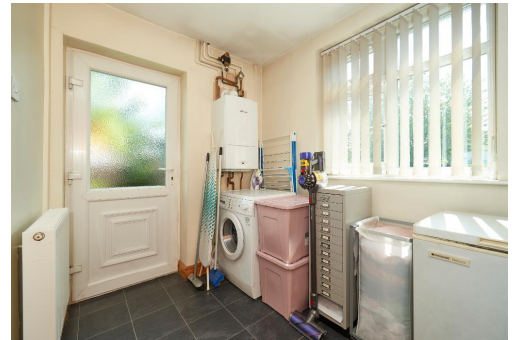
3 Bedroom Semi-Detached for Sale - Offers in Excess of £475,000

West Vale Road, Timperley, WA15 7RN



## Description

A fantastic opportunity to purchase a good size 1930's semi in a highly desirable location which is walking distance of both Altrincham town centre, The Metrolink and excellent local Schools. Already extended to the side and rear the property offers further potential to create a fabulous open plan kitchen/living/dining room with a few internal alterations. The current internal accommodation comprises Entrance Hallway, Bay fronted Dining Room, Living Room with doors opening into the conservatory, Kitchen, family room, utility room and cloakroom/WC . On the first floor there are three bedrooms and a family bathroom. The property is warmed by a GCH system and UPVC D/Glazed. Being on a corner plot, externally there is a spacious driveway with good size gardens to three sides of the property.



Total Area: 126.4 m<sup>2</sup> ... 1361 ft<sup>2</sup>

