



Jackson Maunders

2 Bedroom Flat for Rent - **£1,400 per month**

Stamford Road, Bowdon, WA14 2JG



Description

A BEAUTIFUL APARTMENT WITH PERIOD FEATURES IN A VICTORIAN CONVERSION IDEAL FOR HALE AND ALTRINCHAM. 1224sqft.

Private Entrance. Entrance Vestibule. Living/Dining Room. Kitchen. Principal Bedroom Suite. Occasional Bedroom. Two Bath/Showers. Two Parking Spaces. Communal Gardens. No Chain.

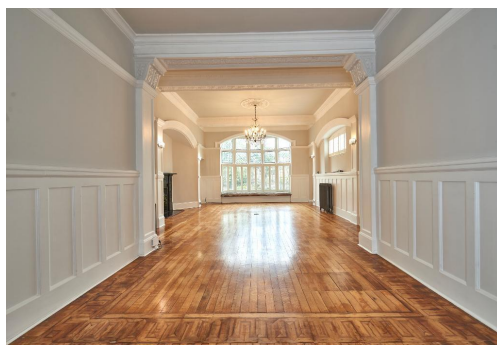
A beautifully presented duplex Apartment within a Victorian conversion with its own private entrance, in the heart of Bowdon making it ideally located for Hale Village, Altrincham Town Centre, the popular Market Quarter and the Metrolink.

The superbly sized Apartment extends to a generous 1224sq ft providing an impressive Living/Dining Room and Kitchen to the Ground Floor.

To the Lower Ground Floor there is a Principal Bedroom Suite with Walk in Wardrobe and En Suite and in addition there is an Occasional Bedroom described as this since the room is internal with no window however offers great occasional use as a Guest Bedroom with an En Suite Shower Room.

The property enjoys a wealth of period features which include 12' ceiling heights, original wood flooring, fireplace features, panelled walls, original floor to ceiling orielle window and detailed cornicing.

Externally, Apartment 2 enjoys its own Private Entrance at the rear of the property overlooking and enjoying views over the Communal Gardens. The Apartment has the valuable feature of Two Allocated Parking Spaces for



Total Area: 122.9 m² ... 1323 ft²