



Jackson Maunders

3 Bedroom Terraced for Sale - **Guide Price £525,000**

Hermitage Road, Hale, WA15 8BW



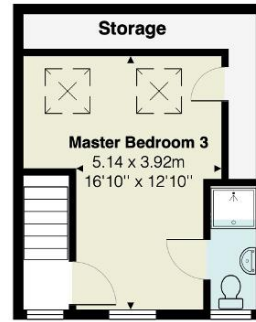
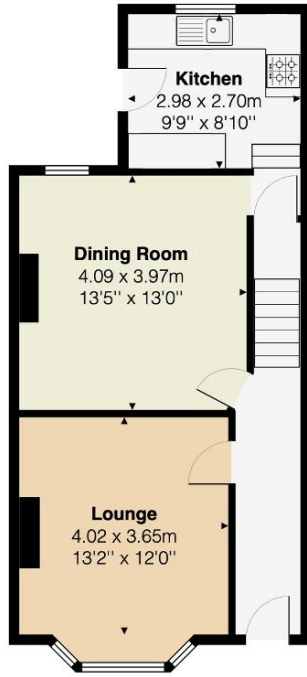
Description

A superbly proportioned Period Terraced property located on a popular road within walking distance of Stamford Park and a variety of local shops, the property is within catchment for Stamford Park, Bowdon Church and The Bollin Primary Schools as well as Altrincham Boys' and Girls' Grammar Schools.

The extensive accommodation which is arranged over Three Floors includes a superb Loft Conversion, Two excellent Reception Rooms to the Ground Floor, in addition to the Kitchen and has Three Double Bedrooms over the Two Upper Floors, served by Two well appointed Bath/Shower Rooms, one being En Suite to the Top Floor Principal Bedroom.

Externally there is on street parking to the front a low maintenance walled garden to the rear. Call now to arrange a viewing!





All measurements are approximate and for display purposes only

Total Area: 118.0 m² ... 1271 ft²